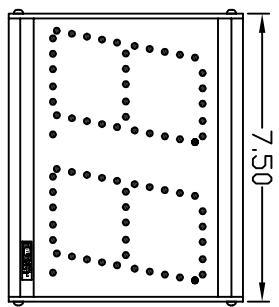
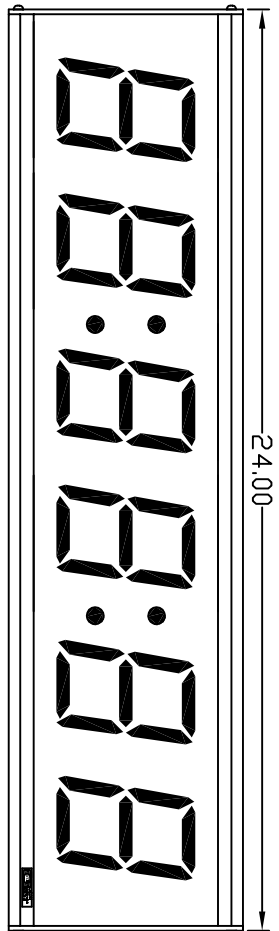


AE4X SERIES DISPLAYS

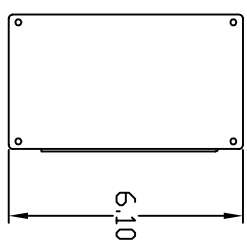
PN AE42-, AE43-, AE44-, AE45-, AE46-



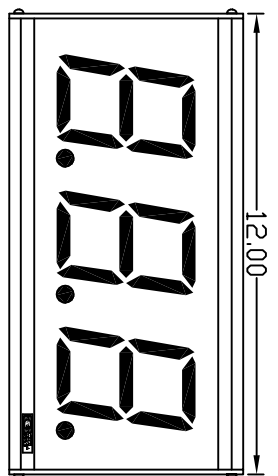
AE42



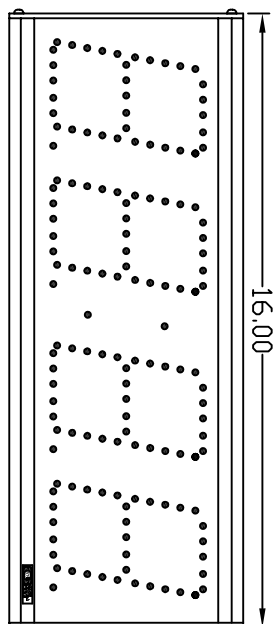
AE46D (AE45, AND AE46S AVAILABLE IN THIS ENCLOSURE)



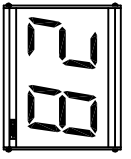
SEE MOUNTING BRACKET DETAIL 'AEINST01'



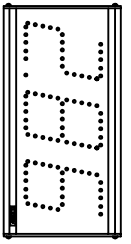
AE43D-



AE44S



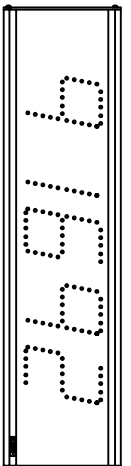
PROCESS INDICATOR UP/DOWN TOTALIZER  
AE42D-341



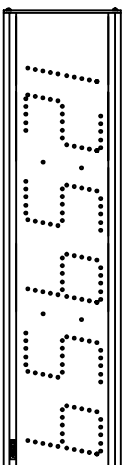
RS232 SYSTEM CLOCK  
AE43D-483



COUNTER  
AE44D-354



MULTI-FUNCTION CLOCK/TIMER  
AE45S-230



TYPICAL EXAMPLES

SPECIFICATIONS:

AE4XS AND AE4XD SERIES DISPLAY AVAILABLE AS MULTI-FUNCTION CLOCK TIMER OR WITH AE OPTIONS TO FUNCTION AS ELAPSED TIMERS, COUNTERS, PROCESS INDICATORS, COMPUTER CONTROLLED DISPLAYS..... BLACK ANODIZED ENCLOSURE  
1/8" RED PLEXIGLASS LENS  
1/8" BLACK ABS BACK PANEL  
AE4XS : 4" TALL DIGITS, SUPER BRIGHT RED LEDS  
AE44D : 4" TALL DIGITS, DIFFUSED SUPER BRIGHT RED BAR SEGMENTS VISIBLE FROM 200 FEET  
STANDARD AE MOUNTING BRACKET PROVIDED  
MOUNTS TO SINGLE, DOUBLE GANG AND 4" BOXES  
OTHER MOUNTING OPTIONS ARE AVAILABLE  
WWW.ATS-USACDM

\\CADLTV\ATS\_DWG\AE\AE4X\  
**ATS APPLIED TECHNICAL SYSTEMS**  
P.O. BOX 5705  
SHREVEPORT, LA  
71135

APPROVALS	DATE	PRODUCT	SCALE
DRAWN BY DTI	4-5-01	AE4X SERIES 2, 3, 4, 5, AND 6 DIGIT DISPLAYS	JOB #
CHECKED BY			SHEET #
APPROVED BY			REVISION
			FILENAME: AE4X-
			DRAWING #
DESCRIPTION ASSEMBLY			