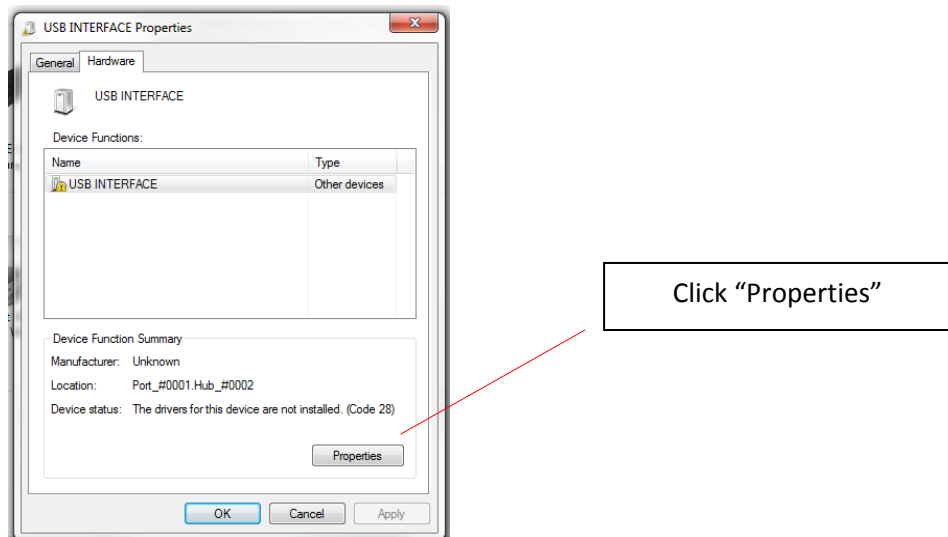
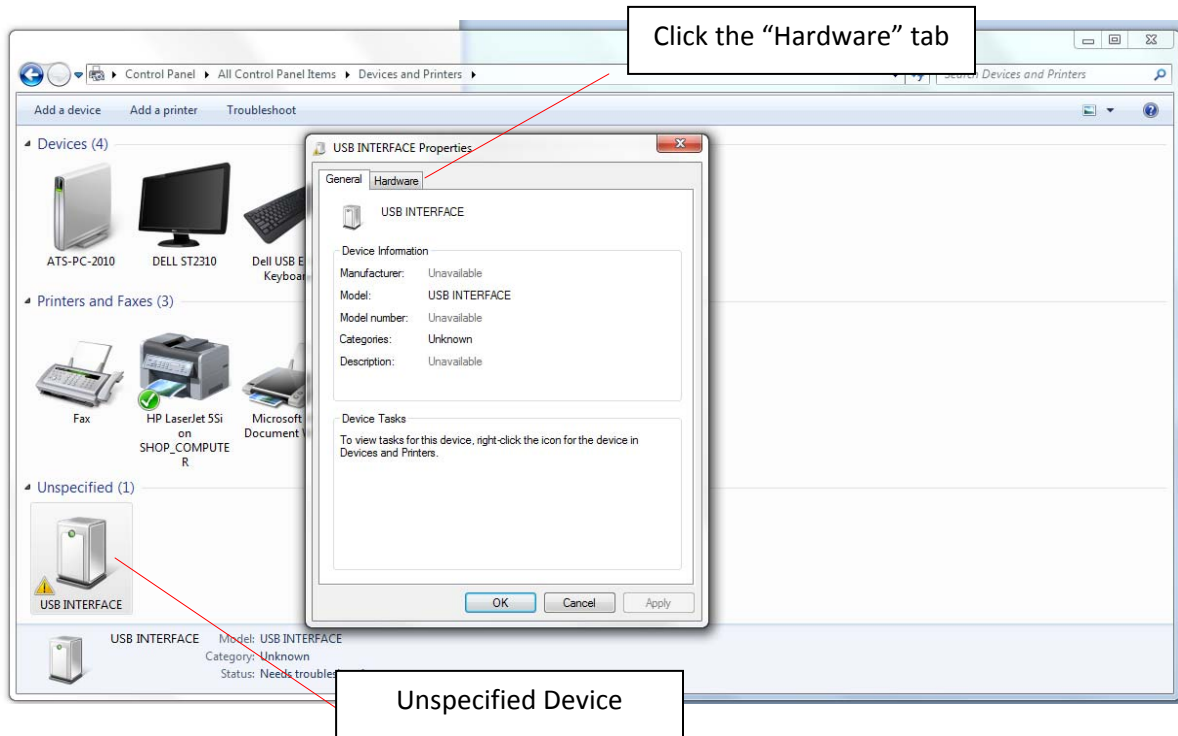
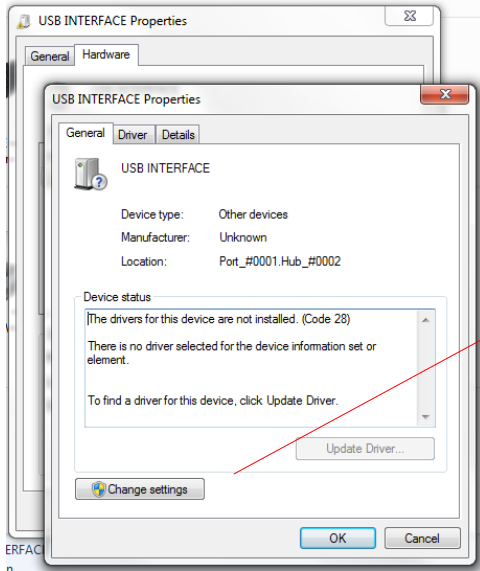


Installing the USB Driver for ATS Products on Windows 7

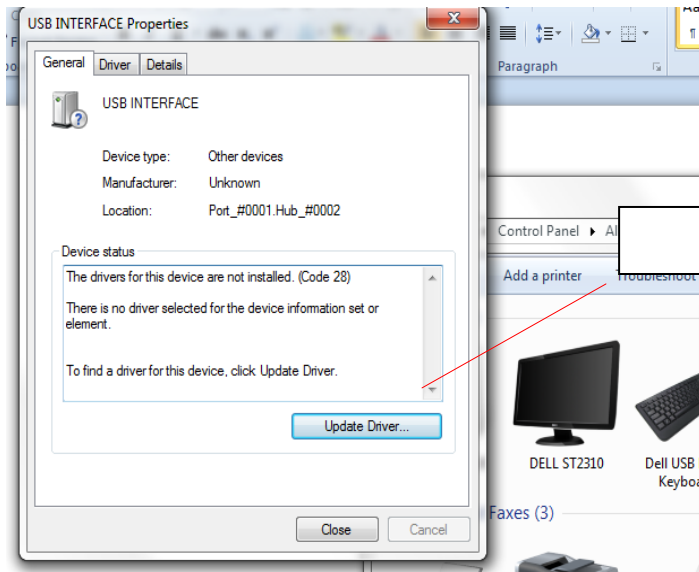
Plug in the USB Device. The system should recognize the device and install it as an “Unspecified” device.

Go to “Devices and Printers” in the Control Panel. The “Unspecified Device” shows up. Right Click on it and select “Properties”.

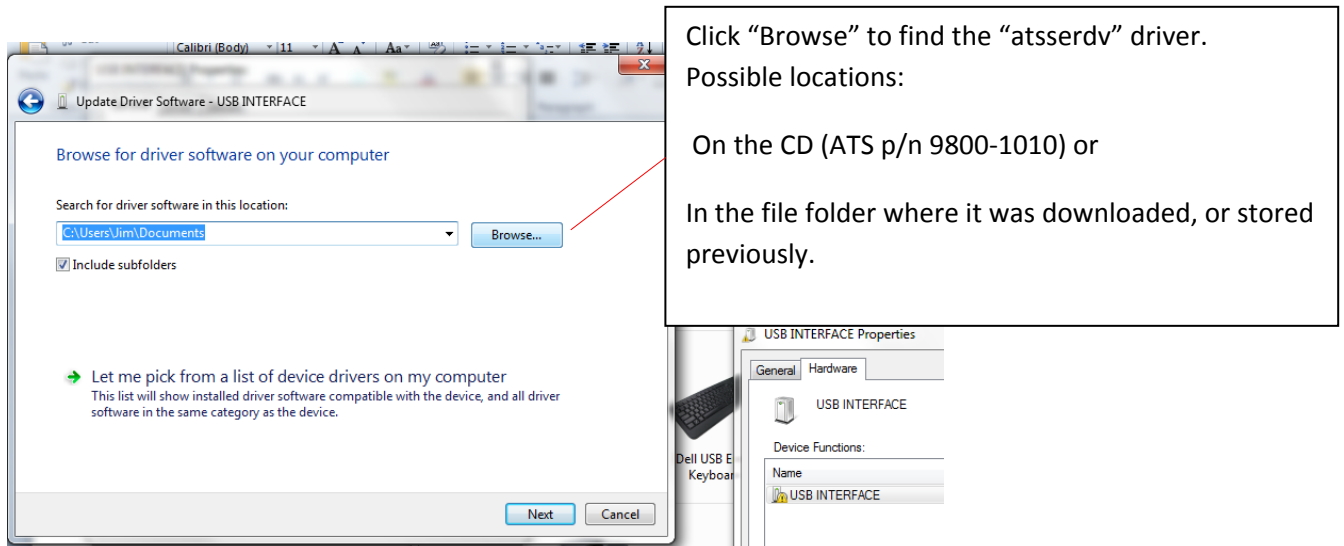
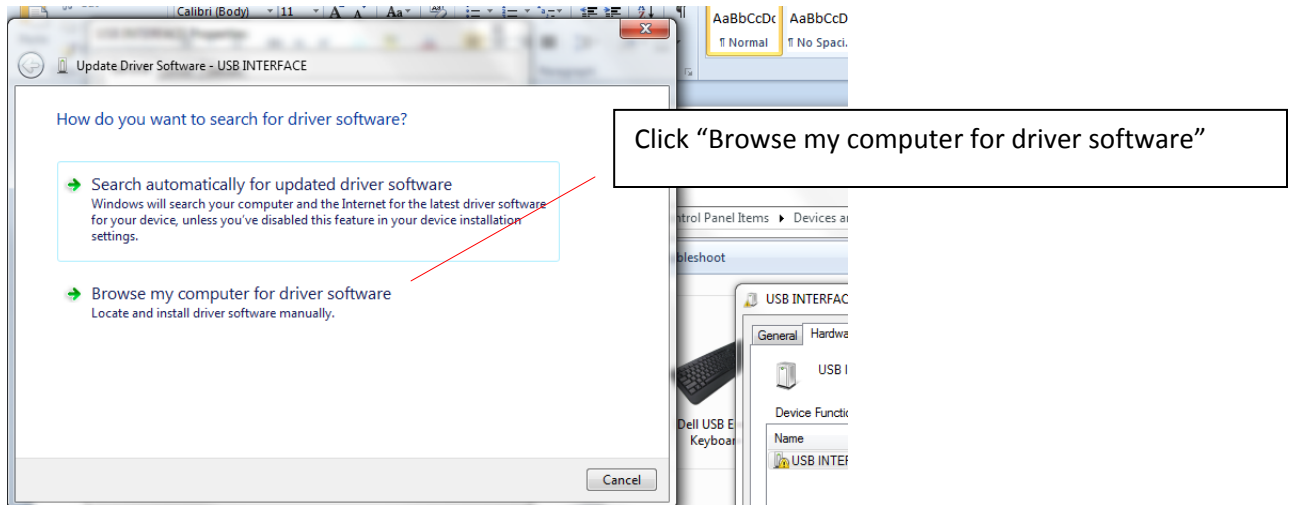




Click "Change Settings"



Click the "Update Driver"



.Once you find the driver, click "Next".

