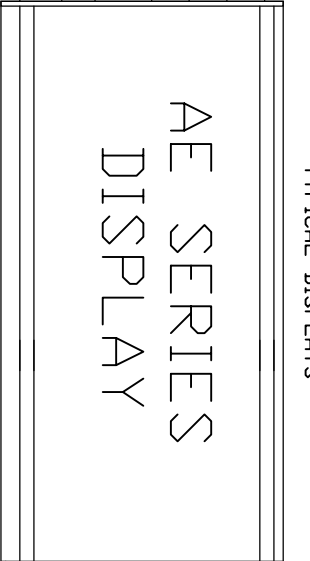
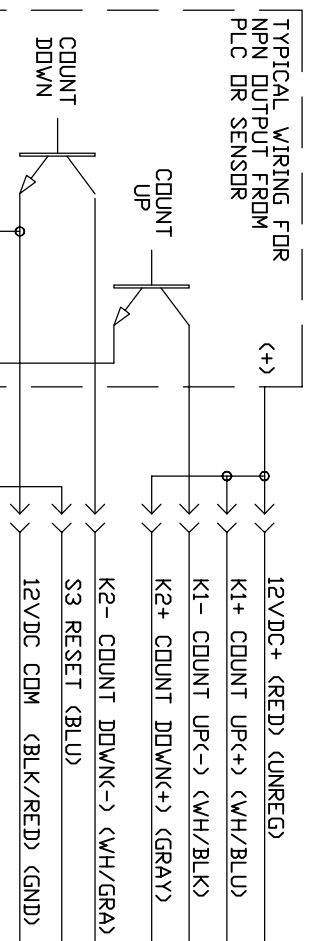


TYPICAL DISPLAYS



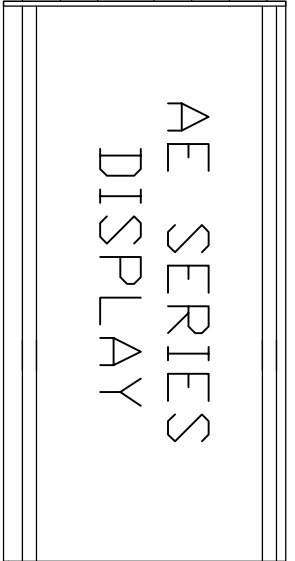
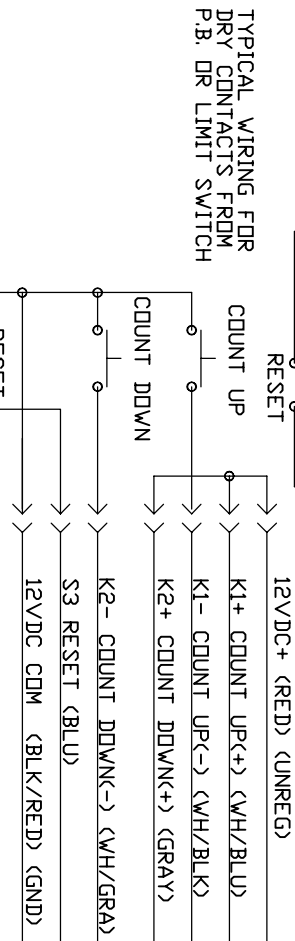
DISPLAYS ARE SHOWN WITH 120VAC POWER.

120 VAC

BLK 18 AWG. _____ LINE

WH 18 AWG. _____ NEUT

GRN/YEL 18 AWG. _____ GND

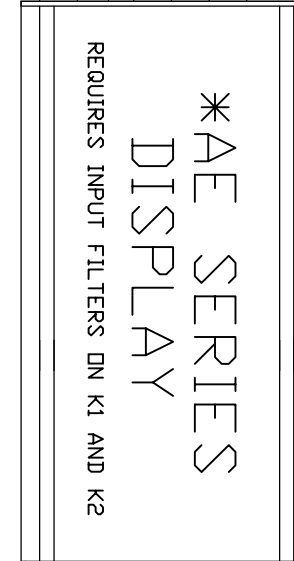
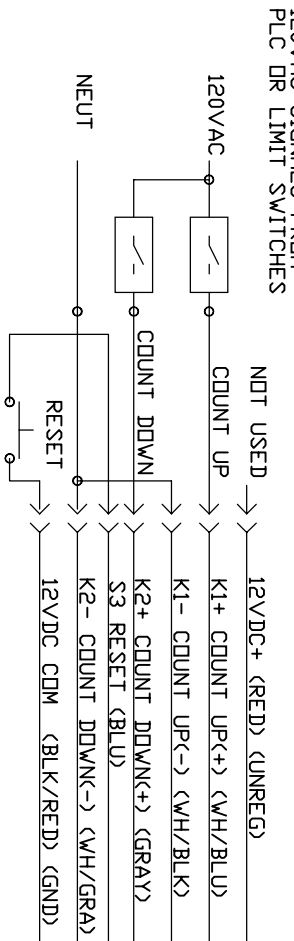


120 VAC

BLK 18 AWG. _____ LINE

WH 18 AWG. _____ NEUT

GRN/YEL 18 AWG. _____ GND



120 VAC

BLK 18 AWG. _____ LINE

WHT 18 AWG. _____ NEUT

GRN/YEL 18 AWG. _____ GND

OPTIONAL POWER AVAILABLE

>> THIS SYMBOL IS USED FOR PIGTAIL LEAD WIRES OR TERMINAL BLOCKS

K1 AND K2 INPUTS ARE OPTD ISOLATED INPUTS. SIGNALS RANGING FROM 5VDC TO 120VAC CAN BE APPLIED.

MOST AE SERIES DISPLAYS ARE PROVIDED WITH #18 AWG, PIGTAIL LEAD WIRES FOR ALL EXTERNAL WIRING.

TERMINAL BLOCKS AND CONNECTORS ARE LOCATED INSIDE EACH AE SERIES DEVICE FOR OTHER WIRING OPTIONS.

** WHEN THE OPTIONAL BUILT-IN RESET SWITCH IS ORDERED, IT WILL BE WIRED AS SHOWN. NOT RECOMMENDED FOR 120 VAC SIGNAL APPLICATIONS.

APPROVALS	DATE
DRAWN BY DTI	6-6-01
CHECKED BY	
APPROVED BY	
REVISED BY	

VCAD LTV\ATS DWGS\AE\OPTIONS\

APPLIED TECHNICAL SYSTEMS

P.O. BOX 5705
SHREVEPORT, LA
71135

SCALE

JOB #

SHEET #

REVISION

FILENAME: 483WD1

DRAWING #

8.5 x 11

PRODUCT

AEXX-483 UP/DOWN COUNTER / TOTALIZER

TYPICAL WIRING SCHEMES

DESCRIPTION

WIRING DIAGRAM